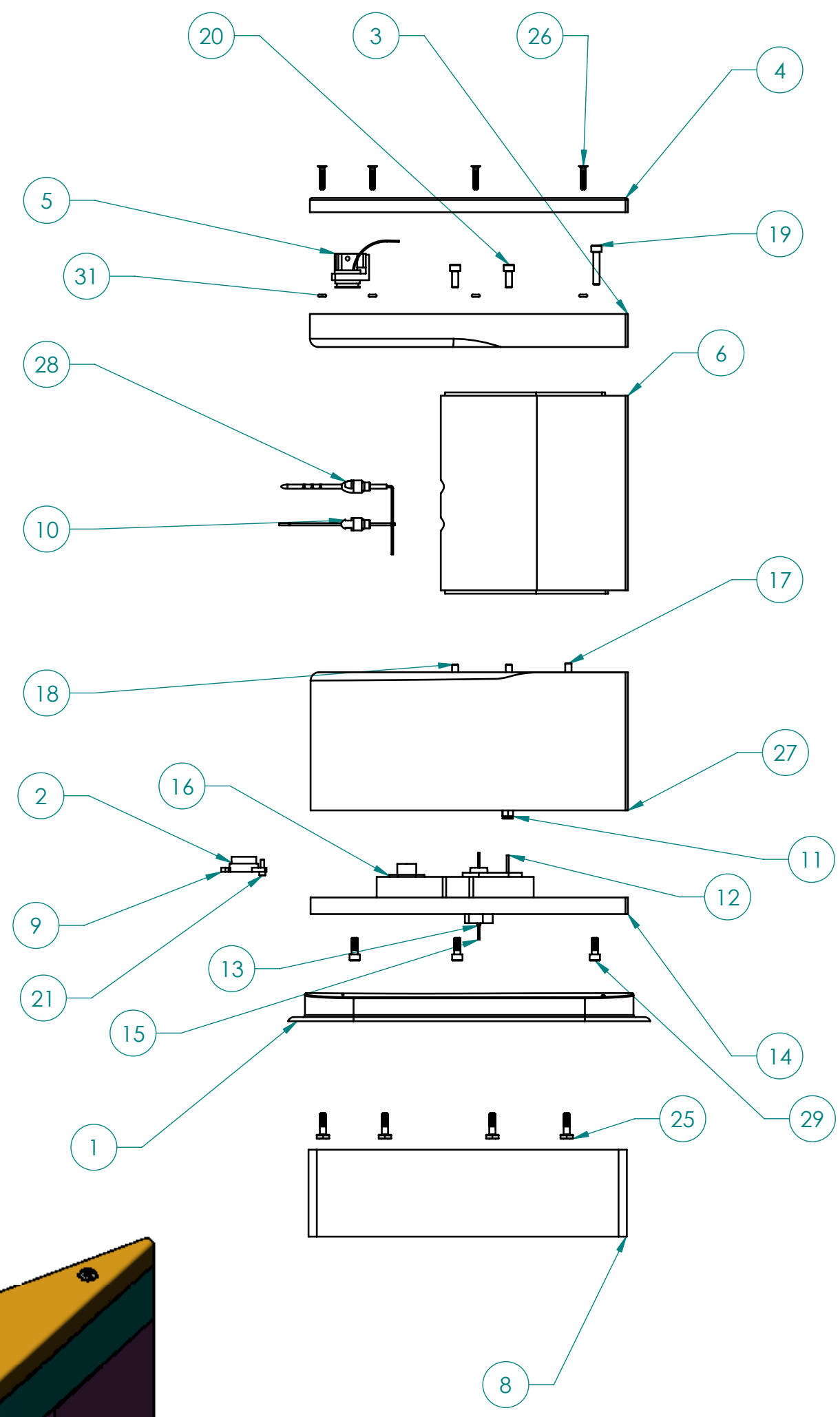
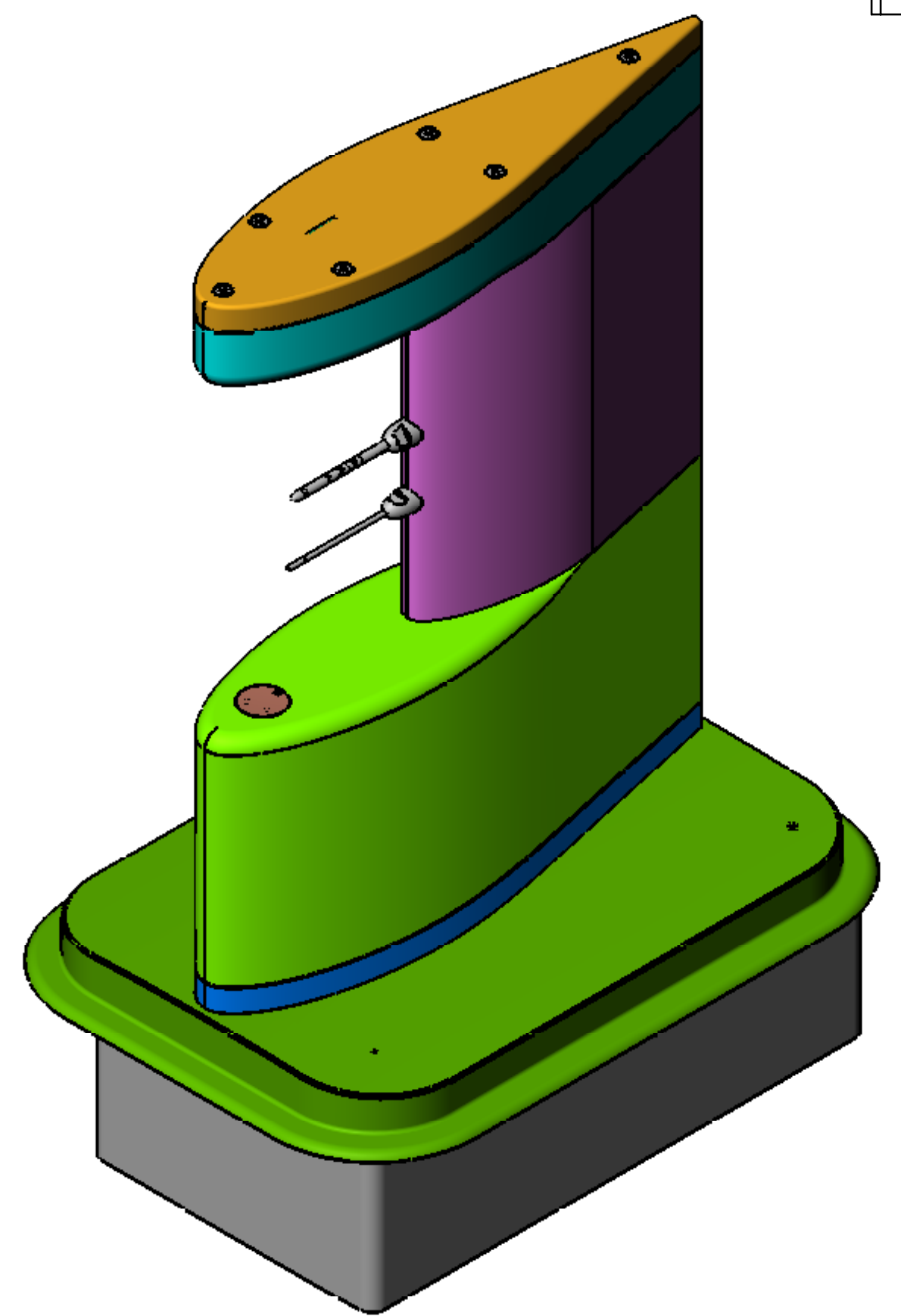
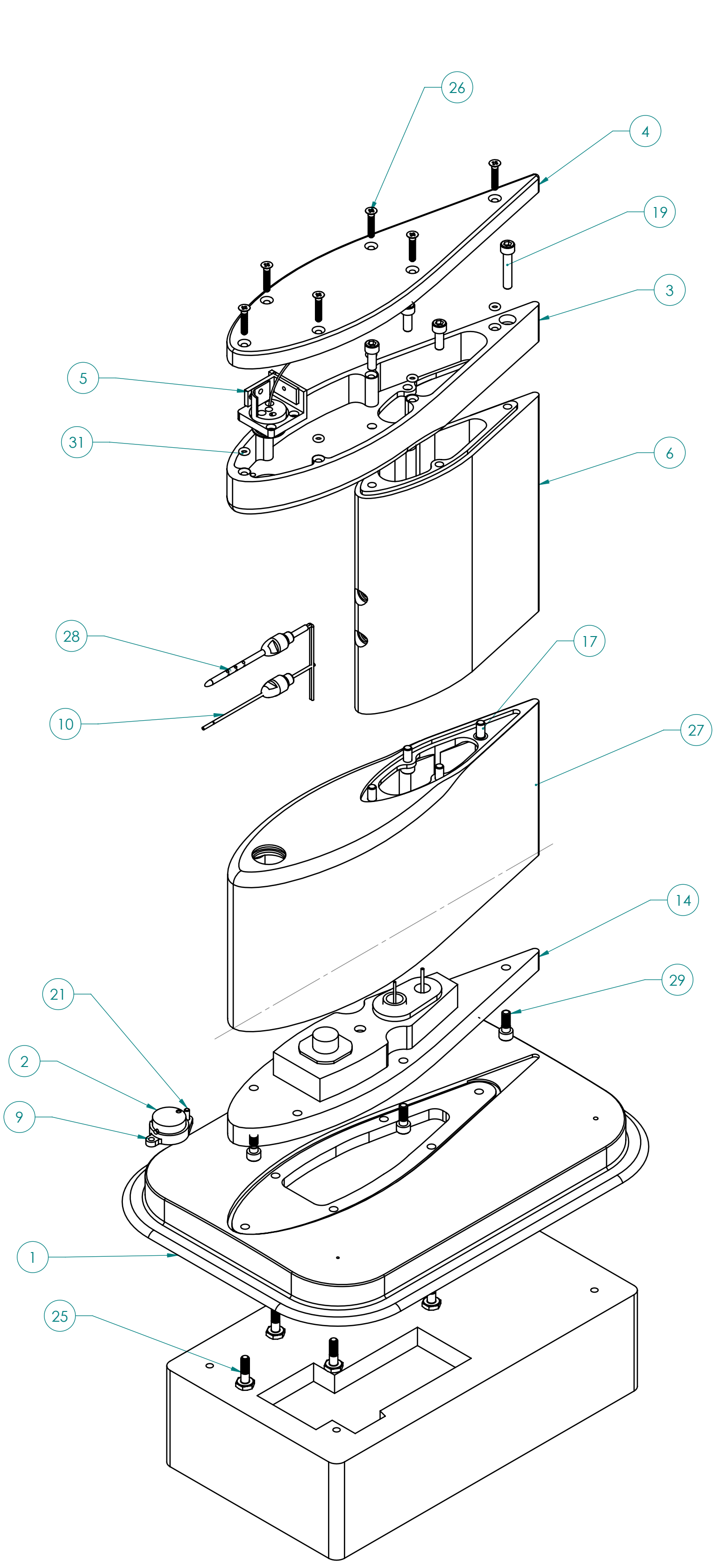


NOTES

1. INTERFACES BETWEEN ITEMS 3,6 AND 27 ARE TO BE SEALED WITH FUEL TANK SEALANT.,

REVISIONS				
ZONE	REV	DESCRIPTION	DATE	APPROVED



ITEM	QTY	PART NO.	DESCRIPTION	MATERIAL SPECIFICATION
31	6	2-006	O-RING	POLYMER
30	1	4-40 X 1/4	SCH CAP SCR, B18.3	
29	5		SCH CAP SCR, B18.3	
28	1		THERMISTOR ASSY	
27	1		part name	ALUMINUM 6061-T6
26	6		SCREW, FLUSH HD, .138-32 x .75	
25	6	AN3-5A	BOLT, HEX HD, .190-32 x .66 FLH, 100~, CL TOL, CRSHD TYPE IA, B18.6,3	
24	1			
23	1		part name	ALUMINUM 6061-T6
22	5	4-40 X 3/8	SHCS	ALLOY STEEL
21	3	4-40 X 3/8	SHCS	ALLOY STEEL
20	3	4-40 X 3/8	SHCS	ALLOY STEEL
19	1	4-40 X 3/8	SHCS	ALLOY STEEL
18	3	4-40 X 3/8	SHCS	ALLOY STEEL
17	1	4-40 X 3/8	SHCS	ALLOY STEEL
16	1	PT07-10	CONNECTOR	ALUMINUM 6061-T6
15	1		FIBER OPTIC FEEDTHROUGH	ALUMINUM 6061-T6
14	1		BULKHEAD	ALUMINUM 6061-T6
13	1		FIBER OPTIC FITTING	ALUMINUM 6061-T6
12	1		TUBE	STAINLESS STEEL
11	1	SWAGELOK SS100-1-2	FEED THROUGH STATIC PRESSURE TIP	
10	1		CELL	ALUMINUM 6061-T6
9	1		electronics box	
7	1		STRUT, LOWER	ALUMINUM 6061-T6
6	1		STRUT MID.	ALUMINUM 6061-T6
5	1		FLAT MIRROR ASSY	
4	1		CAP	ALUMINUM 6061-T6
3	1		UPPER STRUT	ALUMINUM 6061-T6
2	1		SPHERICAL MIRROR	
1	1		PLATE	7050-T7451

UNLESS OTHERWISE SPECIFIED PART NO. APPROVALS DESCRIPTION OR DIMENSIONS ARE IN INCHES. TOLERANCES ARE:

DECIMALS: X = ±.03 ANGULAR: FORMED=±2° MACHINED=±.5°
 XX = ±.01
 XXX = ±.004

DO NOT SCALE DRAWING
 NEXT ASSEMBLY

DR. _____
 ENG. _____
 CHK. _____
 APPD. _____
 APPD. _____
 EFFECTIVITY _____

DATE _____

HIAPER NATIONAL CENTER FOR ATMOSPHERIC RESEARCH
 1850 TABLE MESA DRIVE
 BOULDER, CO 80305

Open Path Cell V2

SIZE: **D** CAGE CODE: **0SEF6** DWG NO. _____ REV. **NC**

SCALE: **1:2** DESIGN & FABRICATION SERVICES, ATMOSPHERIC TECHNOLOGY DIV. SHEET **1 of 2**

4

3

2

1

JOB _____